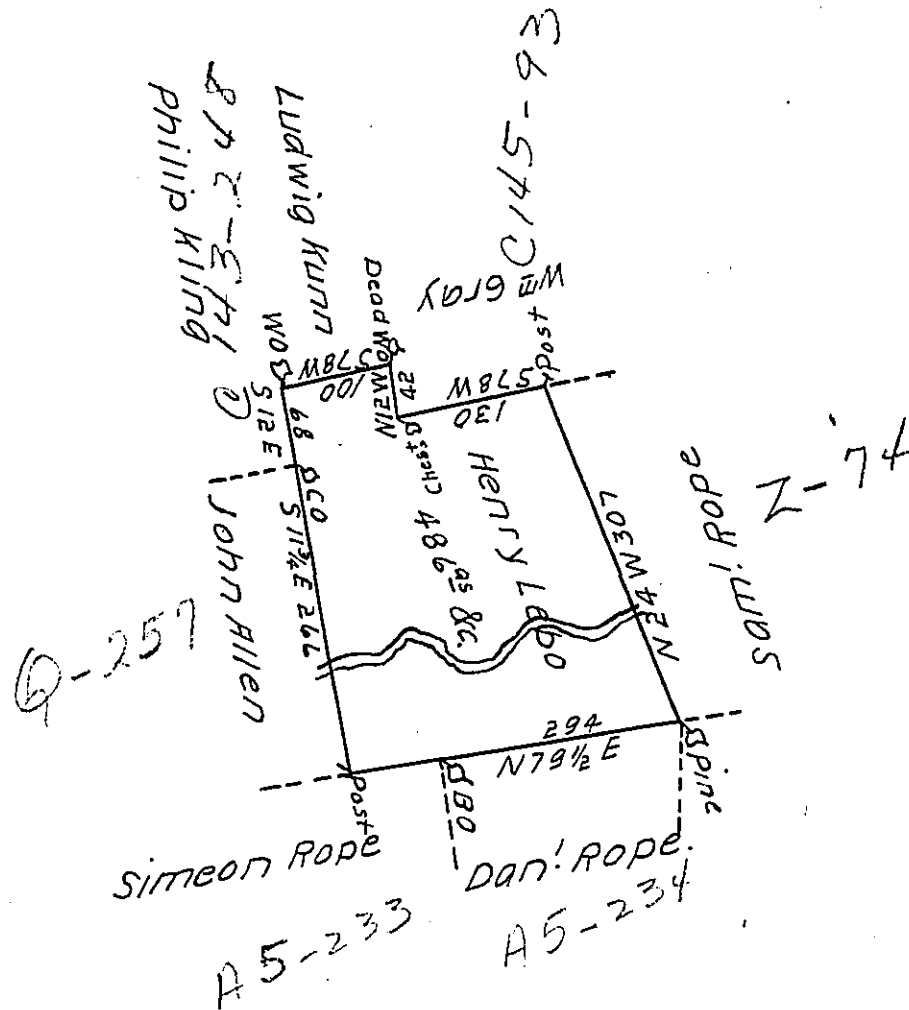


77
 Sug. Loaf -
 Luzerne.



Draft of a tract of land called _____ Situate on
 Black Creek in the County of Northum^d Containing
 four Hundred & Eighty Six Acres & ALLOW^e Surveyed
 for Henry Lebo the 8th day of October 1793 by Virtue
 of a Warrant dated the 13th day of June 1793
 by W^m Gray D.S.

To Daniel Brodhead Esq^r }
 Surv^r Gen^l }

IN TESTIMONY that the above is a copy of the original remaining on file in
 the Department of Internal Affairs of Pennsylvania, made
 conformably to an Act of Assembly approved the 16th day of
 February, 1833, I have hereunto set my Hand and caused
 the Seal of said Department to be affixed at Harrisburg,
 this nineteenth day of February, 1912.

Henry Howell

Secretary of Internal Affairs.